

HTW

QUALITY COMFORT EVERYWHERE

MULTISPLIT RANGE IX21D5

3 YEARS WARRANTY
TOTAL QUALITY COMMITMENT

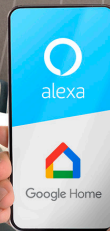
20dB
SEGÚN MODELO

Enjoy of comfort

With the IX21D5 split you will be able to live the best comfort, with its triple filter you will eliminate bad odors and small particles, also thanks to its included Wi-Fi you will be able to control all the functions wherever you are.



TRIPLE
FILTER



Clean Air

Includes Cold Catalyst, Silver Ion and Activated Carbon filters to eliminate bad odors and particles.



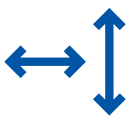
Wi-Fi Included

You can control the equipment from a smartphone, tablet or by voice with Alexa and Google Home.

CONNECTA+

Optional Conecta+

Special plate for automatic ON/OFF switching of the air conditioning in hotel cards, tourist flats or window sensors.



Versatility

Soporta grandes distancias de instalación: 50 m de distancia y 25 m de desnivel (para el modelo 7,1 kW).



Service life

The coils of the indoor and outdoor unit have Golden Fin protection, an anticorrosive for saline environments that extends their durability.



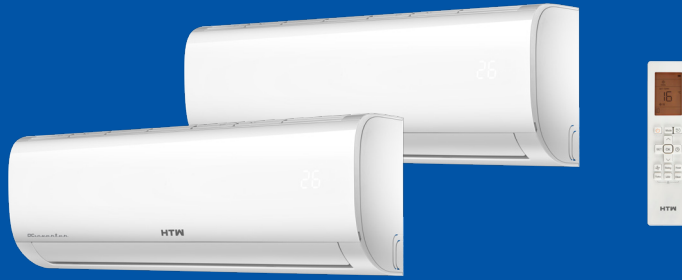
Comfort

With the "I Feel" function, the split takes as the reference temperature of the room the one with the remote control.



Efficient

Energy classification A+++ in cooling and A+++ in heating for hot areas.



MULTISPLIT IX21D5



CONNECTA+
Optional

Compressor and fans DC Inverter

Protection Golden fin

Timer 24 h

Auto diagnosis

Function Anti-cold

Dehumidifier

Drain through both sides

Detector leak (EC)

Mode evening

MODEL		HTW-MSI-020IX21D5R32	HTW-MSI-026IX21D5R32	HTW-MSI-035IX21D5R32	HTW-MSI-052IX21D5R32	HTW-MSI-071IX21D5R32	
CODE EAN		8435483863927	8435483855113	8435483855120	8435483855137	8435483855144	
Power supply		V, F, Hz 220-240V (1 Phase ~ 50Hz)					
PERFORMANCE							
Cooling capacity	Capacity	kW	2	2,64 (0,91-3,72)	3,52 (1,12-3,93)	5,28 (1,99-6,73)	7,03 (2,08-7,92)
		Btu/h	7000	9.000 (3.100-11.600)	12.000 (3.800-13.400)	18.100 (6.800-23.000)	23.900 (7.100-27.000)
Heating capacity	Capacity	kW	2,34	2,93 (0,82-3,37)	3,81 (1,09-4,17)	5,57 (1,29-6,74)	7,33 (1,62-7,92)
		Btu/h	8000	10.000 (2.800-11.500)	13.000 (3.700-14.200)	19.000 (4.400-23.000)	25.000 (5.500-27.000)
FEATURES							
Indoor unit	Sound power	dB(A)	50	50	54	56	59
	Sound pressure (H/M/L)	dB(A)	37/32/25/21,5	37/32/25/21,5	39,5/35,5/25/21,5	42,5/36/26/20	45/40,5/36/29,5
	Air flow rate	m³/h	435/333/259	435/333/259	530/430/310	840/680/540	980/817/662
	Operating temperature	°C	17~30	17-30	17-30	17-30	17-30
DIMENSIONS AND WEIGHT							
Indoor unit	Net dimensions (W×H×D)	mm	715x285x194	715x194x285	805x194x285	957x302x213	1040x327x220
	Gross dimensions (W×H×DxD)	mm	780x365x270	780x270x365	870x270x365	1035x385x295	1120x405x315
	Net / Gross weight	kg	6,7/8,8	6,7/8,8	7,3/9,5	10/13	12,3/15,8
CONNECTIONS							
Refrigeration piping	Liquid - Gas	Inch.	1/4"-3/8"	1/4"-3/8"	1/4"-3/8"	1/4"-1/2"	3/8"-5/8"
Electrical connections	Interconnection	mm	3 x 1,5 + T	3x1,5+T	3x1,5+T	3x1,5+T	3x1,5+T

HTW reserves all rights to modify models and technical data without prior notice. Valid information except typographical or printing error.

Notes:

Capacity data in standard conditions. Actual data will vary depending on where the equipment is installed and how it is used. The dimensions of the electrical wiring are approximate, they must be calculated based on the conditions of the installation itself.