

VENTILATION | AIR CURTAIN UVC



Ultraviolet light air barriers

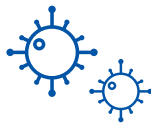
Curtains with UVC light provide a clean air barrier that, in addition to preventing air conditioning losses, eliminates pathogens from the air.

UVC



Air disinfection

Includes UVC light with a high virus and bacteria removal rate.



Elimination of viruses and bacteria

With this technology we can eliminate a wide variety of environmental pathogens such as viruses, bacteria and allergens.



Effectiveness

It has a 99.99% virus removal rate.



Long useful life

Ultraviolet light has a useful life of 5.000 hours.



No toxic waste

Eliminates and deactivates pathogens without generating waste.



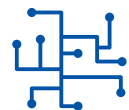
Easy installation

Available in different dimensions to adapt to any door size.



Easy control

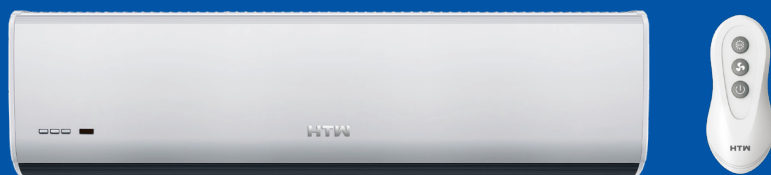
Includes remote control for easy handling and control.



Multiple uses

It can be used in all types of facilities, whether they are domestic or work centers, public buildings or laboratories.

VENTILATION RANGE



AIR CURTAIN UVC

UVC



Anti-virus and
anti-bacteria



Remote control

MODELS		HTW-AC9-1400UVC	HTW-AC12-1900UVC	HTW-AC15-2500UVC	HTW-AC20-3600UVC
EAN CODE		8435483829602	8435483829596	8435483829589	8435483829572
Power Supply	V,ph,Hz	220–240V (1 Phase ~ 50Hz)			
POWER					
Curtain consumption (H/L)	W	200 / 170	260 / 230	330 / 300	400 / 370
UVC lamp consumption	W	55	55	110	110
PERFORMANCE					
Indoor air volume	m³/h	1.030	1.400	1.780	2.360
Airspeed	m/s	14,5	14,5	14,5	14,5
Sound level (H/L)	dB(A)	51 / 48	52 / 49	54 / 52	57 / 65
DIMENSIONS AND WEIGHT					
Net dimensions (WxHxD)	mm	900x217x205	1.200x217x205	1.500x217x205	2.000x217x205
Gross dimensions (WxHxD)	mm	950x260x260	1250x260x260	1550x260x260	2050x260x260
Net/Gross weight	mm	12,5 / 14	15,5 / 17,5	19,5 / 21,5	25 / 27,5
Min / max height	m	2,3 / 3	2,3 / 3	2,3 / 3	2,3 / 3

Notes:

Capacity data under standard conditions. Actual data will vary depending on where the equipment is installed and how it is used.

The dimensions of the electrical wiring are approximate, it must be calculated based on the conditions of the installation itself.